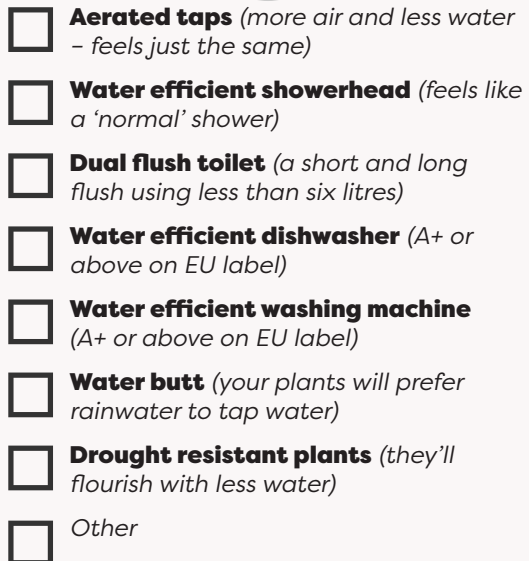


Your new water efficient home

Congratulations on moving into your new, water efficient home, we hope you love it.

Here are some of the water-saving features you'll find installed by your homebuilder.

- 
- Aerated taps** *(more air and less water - feels just the same)*
 - Water efficient showerhead** *(feels like a 'normal' shower)*
 - Dual flush toilet** *(a short and long flush using less than six litres)*
 - Water efficient dishwasher** *(A+ or above on EU label)*
 - Water efficient washing machine** *(A+ or above on EU label)*
 - Water butt** *(your plants will prefer rainwater to tap water)*
 - Drought resistant plants** *(they'll flourish with less water)*
 - Other**

We want to see water use in England fall. New homes will be built in a way that reduces demands for water, energy and material resources.

25-Year Environment Plan, launched by the Prime Minister in 2018

How you'll benefit from your water efficient home?



Saving money

Your new home is fitted with a water meter, which means your water bills will be based on the amount of water you use.

The water-saving fixtures and fittings we've installed for you will help keep your bills as low as possible.



Saving water

Saving water is good for your local wildlife, community and economy.

Water supplies are under pressure as we build more homes for more people and feel the effects of climate change. We all need to leave more water in the environment to protect rivers, streams and wildlife.



Saving energy

If you're using less water, then you'll need less energy to heat hot water – so you can save money on your energy bills too.



Your children and grandchildren will thank you for supporting the planet for their future.

Ways to save even more

There are many simple ways you can save even more water, energy and money:

Turn off the tap while brushing your teeth – a running tap can waste 6 litres a minute. A family of four could save around £35 on water bills

Recycle your bath water for houseplants or the garden

If you're buying **new washing machines or dishwashers** – look for an **energy and water efficient model**

Choose a shower instead of a bath – it could use half the water and save up to £50 a year

Spend one minute less in the shower – the savings will quickly add up – you could save about £20 on your water and energy bills

Make sure your **washing machine and dishwasher are full** before switching them on

If you do use a hosepipe, **attach a trigger gun, or connect it to a water butt.**

You can find more water-saving advice, and sometimes free products, from your local water company. Water companies are playing their part by reducing leaks and supporting us and you to save water.

waterwise

Waterwise, an independent organisation focused on reducing water consumption in the UK, can also help – visit waterwise.org.uk

We all have a role to play in making sure there's enough water for people, the environment and the economy. It's nice and easy and can cut your water and energy bills!

Nicci Russell, Managing Director, Waterwise

Need a helping hand from a plumber?

If you need a plumber to help with the water fittings in your home, it's important they are properly trained to keep your drinking water healthy.

WaterSafe is the free national register of approved plumbers in the UK and it's supported by all the water companies and the water quality regulators.

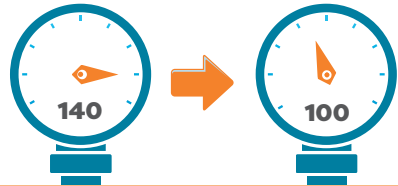
Plumbers on the register are all fully trained in the Water Fittings Regulations, which are designed to keep your water safe and avoid leaks and waste.

Approved products

WaterSafe plumbers can also offer advice on buying approved plumbing products – which help avoid waste and keep water healthy.



An easy way to check if a product is suitable is to look for an approval mark, from schemes like the Water Regulations Advisory Scheme (wras.co.uk) or Kiwa (kiwa.co.uk/waterproducts).



The average UK water use is about 140 litres per person right now. The National Infrastructure Commission is recommending 118 litres for everyone – new homes and old – and water companies are setting ambitious targets in their long-term plans – some as low as 100.



You can find your nearest WaterSafe approved plumber at watersafe.org.uk